

Dyck Arboretum of the Plains

PrairieWindow

to promote through education and stewardship, the conservation and use of plants native and adaptable to Kansas



Spring 2013 Vol. 23 No 1

Prairie-Inspired Artists Featured at March 9 Symposium

by Brad Guhr,
Education Coordinator

Kansas is fortunate to have within its boundaries some of the most expansive tracts of tallgrass prairie in the world and, more than any other place, can lay claim to the prairie as its iconic landscape. Prairie shapes the ecology and biology of our native Kansas wildlife. It permeates our natural and cultural history giving us a sense of place, and it is foundational to our ranching and agricultural economy.

The prairie identity is also richly represented in the visual arts. Talented Kansas artists are embracing the prairie and enriching the lives of people through their art in a variety of forms. This symposium will showcase brief presentations from artists representing a diversity of media as they share images, processes, stories and inspirations that expand the beauty of their work. Works of art will be on display and for sale. Come help us celebrate this connection between the visual arts and the prairie.

The day (Saturday, March 9) will begin at 8:30 a.m. with registration and a continental breakfast, followed by a welcome and introduction at 9 a.m.

The morning's presenters include Paul Friesen, primitive pit-fired pottery; Gail Lutsch, printmaking; Matthew Richter, painting; Jim Griggs, photography; Bill McBride, sculpture; Conrad Snider, ceramics; and Stephen Perry, printmaking.

After lunch, presentations will continue with Mark Feiden, photography; Terry Corbett, ceramics; Steve Murillo, sculpture; Lorna Harder, botanical illustration; and Bob Regier, printmaking.

Other highlights of the day will include a pit-firing demonstration by Paul Friesen, clay art displays by Hanna Eastin, painting demonstrations by Cher Heller-Olson, Joe Loganbill, and Matthew Richter, and the opportunity to purchase artwork.



Print of *Gaillardia aristata*, "Indian Blanket Flower" by Lorna Harder.

Go Green Leprechaun Chase on March 16

On Saturday, March 16, 2013, Dyck Arboretum of the Plains will host its 3rd Annual "Go Green at Dyck Arboretum" 2-mile fun run. Registration begins at 9:15am and the race starts at 10am. Participants are invited to dress up in "Go Green" themed costumes and may win prizes for the following "Greenest Costume" contest categories: The Color Green, Recycled Materials, Most Irish Overall.

Prizes will also be awarded to the top runners in a variety of age groups. See [www.dyckarboretum.org/Events & Classes](http://www.dyckarboretum.org/Events%20Classes) for more details and to download the registration form.

Sponsors:



FloraKansas Spring Plant Sale; April 25 - 29, 2013 (see plant list and other details inside)

Music and Food in the Garden - A Prairie Soirée

Sunday, June 23, 2013 from 7 to 9 p.m.

A Prairie Soirée is the Dyck Arboretum of the Plains' premier event of the year. With a \$100 ticket (partially tax-deductible), you will experience a delightful evening and help the Dyck Arboretum continue to carry out its mission. Reservations are due by June 14.

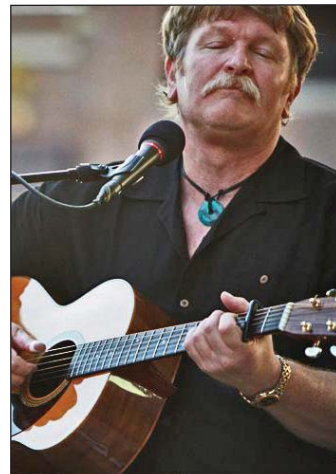
There will be refreshing prairie-inspired drinks along with several courses of tasty hors d'oeuvres to be savored as you stroll the grounds amidst talented musical performers.

Musicians will include Bruce Huss (flat pick guitarist-singer/songwriter), Kentucky and Micah White (gypsy jazz guitar) and the Sunflower Trio (classical music with piano, violin and voice).

Arboretum staff will provide educational interludes about the summer gardens throughout the evening. Please join us for great music, delicious food and drink, and June wildflowers on a summer evening in the prairie garden!

Visit. Celebrate. Support. Explore. Enjoy.

Clockwise, from top: Classical Music with the Sunflower Trio, Bruce Huss - Guitarist-Singer/Songwriter, and Kenny White - Gypsy Jazz Guitarist.



Volunteer Vignette: Tuesdays at the Arboretum

It is safe to say that our organization could not succeed without our dedicated volunteers. In 2012, our volunteers contributed over 2,000 hours of valuable service to help us accomplish the work of the arboretum. We encourage volunteers to use their skills and interests to help in our valuable work. Volunteering is a great way to support our mission, as you share your experiences about this prairie garden with others, learn about plants, meet new people and serve our visitors.

"Tuesdays at the Arboretum" are now scheduled from March 5 through June 25. Come at 9 a.m. each Tuesday, work until noon, and we will provide a lunch for you as a THANK YOU for your service. There will be a variety of service opportunities, from grounds work to cleaning in the facilities to data entry and record keeping. There will be something for everyone. If you are interested in helping, please contact the arboretum no later than the Monday prior to your work day so we can include you in the lunch head count.

Come and enjoy fellowship, good work, and a beautiful place to be!

Prairie Gardening at Schools - Calling All K-12 Teachers!

Earth Partnership for Schools (EPS) in Kansas will be starting its 7th year at Dyck Arboretum of the Plains this June providing high quality educational programming about the prairie and natural and cultural history of the Kansas Plains.

The EPS 40-hour Summer Institute (June 3-7, 2013) will train teachers to restore a native habitat garden with students on school grounds. While focusing on ecology, the EPS curriculum also incorporates the subjects of mathematics, history, science, social studies, language arts, art, and music. EPS offers teachers training, substantial support, a well-developed curriculum that corresponds to state standards, and expertise to create a native habitat garden with students on school grounds.

Institute attendees receive:

- three hours of graduate credit (optional)
- an extensive, easy-to-use curriculum
- professional, on-site consultation by Arboretum staff
- ongoing curriculum development support
- leadership for a prairie field trip
- school-wide in-service opportunity

The EPS Program is made possible with support from Cargill Inc., K.T. Wiedeman Foundation, the Kansas Health Foundation, and Kansas Native Plant Society.

Contact Brad Guhr, Kansas EPS Coordinator, for further information at (620) 327-8127 or email bradg@hesston.edu.

Prairiestock Local Music Festival

Saturday, April 27, 2013 from 9 a.m. to 6 p.m.

South Central Kansas is rich with great music in a variety of genres and we want to celebrate this treasure with our first ever Prairiestock Local Music Festival on Saturday, April 27, during our spring FloraKS Plant Sale. Bring a lawn chair, enjoy a wide variety of musical artists, dine on the tasty offerings of local food vendors, shop for plants, and take in a spring day at the Dyck Arboretum. Admission is a \$5 wrist band for adults, children 16 and under are free. If it is raining, we'll move inside to the Prairie Pavilion. See the following list of participating artists and check our website (events and classes) for schedule updates.



Kaleigh Glanton



Thor Bonner

Book of Jebb	Folk/Bluegrass
Chris and Christine Crouse-Dick	Acoustic Duo
Delores and the Pickin'-Fretter	Accordion, Guitar, and Cello
Kaleigh and Howard Glanton	Singer-songwriter & Acoustic Guitar
Jacob Penner Jazz Ensemble	Jazz
Jammin' Biscuits	Bluegrass
Ne'erdownells	Acoustic/Roots/Rock
Raging Sea	Folk/Indie Rock/Celtic
Thor Bonner	Acoustic Guitar

Native Landscaping Class – Creating A Sense of Place

by *Scott Vogt, Executive Director/Horticulturist*

A coneflower in bloom is beautiful. The way native grasses sway with just the gentlest breeze captivates the imagination. A monarch sipping nectar from a Butterfly Milkweed is mesmerizing. A vista of the Flint Hills in spring is unique to our part of the world.

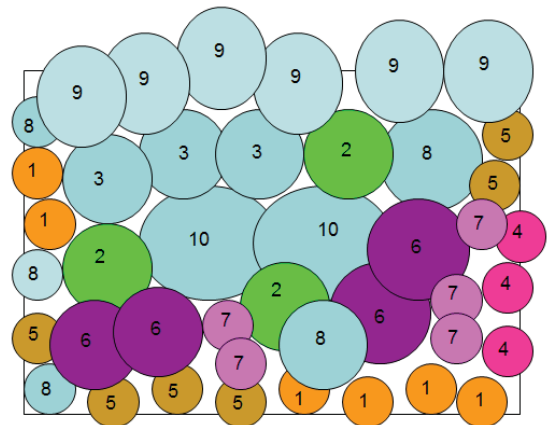
The resiliency of the prairie is inspirational. The character of native plants and how they have survived for thousands of years provides us with a sense of place, so when you plant with natives, the result is more than a beautiful landscape.

Join Scott Vogt as he takes you through the process of planning, designing, installing and maintaining a native landscape. Come prepared with a scale drawing of your landscaping site. Attendees will receive an additional 5% discount at our 2013 spring plant sale to purchase the plants from their design.



Cost is \$15/person, \$12/members. Come either Tuesday, March 26 (6:30-8 p.m.) or Saturday, April 13 at 9-10:30 a.m. Call the arboretum for reservations at 620-327-8127, or email arboretum@hesston.edu.

Sample Landscape Design



Sun Lovers Recipe-A

1. **MO Evening Primrose**
2. **Smooth Penstemon**
3. **Blue Star**
4. **Narrow-leaf Coneflower**
5. **MO Black-eyed Susan**
6. **Button Blazing Star**
7. **Purple Prairie Clover**
8. **Little Bluestem**
9. **Aromatic Aster**
10. **Big Bluestem**



2013 PLANT LIST
FloraKansas: The Great Plains Plant Bazaar
Dyck Arboretum of the Plains

177 West Hickory, Hesston, KS 67062
620-327-8127 • www.dyckarboretum.org • arboretum@hesston.edu

Funds generated from the sale of these plants help support our continuing mission: to promote through education and stewardship, the conservation and use of plants native and adaptable to Kansas.

The Arboretum maintains gardens and prairie plant collections for education and conservation, providing a natural setting for reflection and appreciation of nature.

THANK YOU FOR YOUR SUPPORT!

PLANTS DONATED BY HIGH COUNTRY GARDENS (www.highcountrygardens.com)

We regret to inform you that High Country Gardens is being sold by David Salman. The new owners will be taking orders for spring beginning in early Feb., as soon as the sale is closed. Go to the website and leave your email address to be notified when the catalog/website will be open for business. Shipping will resume in mid-April of this year (2013). We want to express our gratitude to David Salman for the support he has given the arboretum through donated plants in the past.

Exposure: S=Sun (all day shade) ltSh=Light Shade (dappled shade 3-6 hrs shade) mSh=Medium Shade (7-8 hrs shade) Sh=Shade
Soil: W=Wet M=Mesic-average garden soil D=Dry

New For 2013	Scientific Name	Common Name	Color	Height (" unless specified)	Bloom	Exposure	Soil
PERENNIALS							
	Achillea 'Coronation Gold'	Yarrow	yellow	18-22	June-Aug	S	WM-MD
	Achillea millefolium						
	'Strawberry Seduction'	Yarrow	red	18-24	June-Aug	S	WM-MD
	'Sunny Seduction'	Yarrow	lt yellow	18-24	June-Aug	S	WM-MD
	Achillea 'Terra Cotta'	Yarrow	peach	24-36	June-July	S	WM-MD
	Acorus calamus	Sweet Flag	green	24-36	June-Aug	S-ltSh	W-WM
	Agastache foeniculum	Anise Hyssop	lavender	24-36	June-Aug	S-ltSh	WM-M
	'Golden Jubilee'	Golden Anise Hyssop	lavender	36	July-Sept	S	M-D
	Allium cernuum	Pink Nodding Onion	pink	10-20	July-Aug	S	WM-MD
	Allium stellatum	Prairie Onion	pink	10-20	July-Aug	S	M-D
	Amsonia 'Blue Ice'	Blue Star	blue	12-15	May-June	S-ltSh	WM-M
	Amsonia hubrechtii	Narrow Leaf Blue Star	blue	18-24	May-June	S-ltSh	WM-M
	Amsonia illustris	Shining Blue Star	blue	18-24	May-June	S-ltSh	WM-M
	Anemone canadensis	Meadow Anemone	white	12-18	May-June	S-ltSh	WM-M
	Aquilegia canadensis	Canadian Columbine	red/yellow	12-24	April-May	S-Sh	M-D
	'Corbett'	Yellow Wild Columbine	yellow	12-18	April-May	ltSh-Sh	M-MD
	Arisaema triphyllum	Jack-in-the-pulpit	green	8-12	April-May	Sh	WM-M
	Asarum canadense	Wild ginger	red/brown	12	May-June	S	M-MD
	Asclepias incarnata 'Cinderella'	Red Swamp Milkweed	red	36-48	July-Sept	S	W-M
	Asclepias syriaca	Common Milkweed	pink	48-60	June-Aug	S	M-D
	Asclepias tuberosa	Butterfly Milkweed	orange	20-24	July-Aug	S-ltSh	M-D
	'Hello Yellow'	Yellow Butterfly Milkweed	yellow	20-24	June-Aug	S-ltSh	M-MD
New!	Asclepias verticillata	Whorled Milkweed	white	18-24	June-Aug	S-ltSh	M-MD
	Aster cordifolius 'Avondale'	Wood Aster	lavender	18-24	Sept-Oct	ltSh-mSh	WM-MD
New!	Aster laevis	Smooth Blue Aster	blue	24-36	Aug-Oct	S-mSh	WM-MD
	Aster oblongifolius 'Dream of Beauty'	Aromatic Aster	pink	12 x 24	Sept-Oct	S	WM-MD
	'October Skies'	October Skies Aster	blue	18	Sept-Oct	S	WM-MD
	'Raydon's Favorite'	Aromatic Aster	blue	30-36	Oct-Sept	S	WM-MD
	Baptisia australis var. minor	Blue False Indigo	dark blue	15-24	April-June	S	M-MD
	Baptisia lactea	White Indigo	white	36-48	June-July	S	M-MD
	Baptisia 'Blueberry Sundae'	False Indigo	indigo blue	36	May-June	S	M-MD
	Baptisia 'Dutch Chocolate'	False Indigo	chocolate/purple	30-36	May-June	S	M-MD
	Baptisia 'Lemon Meringue'	False Indigo	lemon yellow	36	May-June	S	M-MD
	Baptisia 'Solar Flare Prairieblues'	Yellow Indigo	yellow-orange	24-36	May-June	S	WM-MD
	Callirhoe alcaeoides 'Logan Calhoun'	White Poppy Mallow	white	8-12	May-Aug	S	M-D
	Callirhoe involucrata	Purple Poppy Mallow	red/purple	6	June-July	S	M-D
	Ceanothus americanus	New Jersey Tea	white	24-36	May-June	S-ltSh	WM-MD
	Clematis fremontii	Fremont's Clematis	blue	12-16	Apr-May	S	M-D
	Dalea candida	White Prairie Clover	white	12-36	June-Sept	S	M-D
	Dalea purpurea	Purple Prairie Clover	purple	15-18	July-Aug	S	M-D
	Dodecatheon meadia 'Album'	White Shooting Star	white	24	Apr-May	S-ltSh	WM-MD
	'Aphrodite'	Pink Shooting Star	pink	20	May-June	S-ltSh	WM-MD
	Echinacea angustifolia	Narrow Leaf Coneflower	pink	18	May-June	S	M-D
	Echinacea pallida	Pale Coneflower	pink	36-48	June-July	S	M-D
	Echinacea paradoxa	Yellow Coneflower	yellow	24-48	June-Aug	S	M-D
	Echinacea purpurea						
	'Rubinstern'	Ruby Star Coneflower	red	36-42	July-Sept	S-ltSh	WM-MD
	Erigeron pulchellus var. pulchellus						
	'Lynnhaven Carpet'	Robin's Plantain	white	12-15	May-June	ltSh-mSh	WM-MD
	Eryngium yuccifolium	Rattlesnake Master	white	36-48	July-Sept	S	WM-MD
	Eupatorium purpureum 'Gateway'	Joe Pye Weed	red	72	July-Sept	S	WM-M
	Filipendula rubra 'Venusta'	Queen of the Prairie	pink	48	May-Aug	S-ltSh	W-M
	Geranium maculatum	Wild Geranium	lavender	12-24	Apr-June	ltSh-Sh	M-MD
	Geum triflorum	Prairie Smoke	red	12-15	April-June	S-ltSh	WM-D
	Helenium autumnale	Helen's Flower	yellow	24-48	Aug-Oct	S-ltSh	W-M
	Heliopsis helianthoides						
	'Tuscan Sun'	False Sunflower	yellow	24-36	June-Sept	S-ltsh	WM-M
	Huechera americana 'Marvelous Marble'	Coral Bells	cream	8-12	May	ltSh-Sh	M-MD
	Hymenoxys scapoza 'Prairie Sunshine'	Plains Hymenoxys	yellow	8	May-July	S	M-MD

	Iris cristata	Crested Iris	blue	6	May-June	mSh-Sh	WM-M
	'Tennessee White'	White Crested Iris	white	8-10	May-June	ltSh-mSh	WM-MD
	Iris versicolor	Blue Flag Iris	blue	18	May-June	S-Sh	W-M
	Liatis aspera	Button Blazing Star	purple	24-36	July-Oct	S	M-D
	Liatis punctata	Gayfeather	purple	12-24	July-Sept	S	M-D
	Liatis pycnostachya	Kansas Gayfeather	purple	30-50	July-Aug	S	W-M
	Liatis spicata 'Alba'	White Marsh Blz Star	white	36	July-Aug	S	W-M
	'Floristan Violet'	Violet Marsh Blazing Star	violet	36-60	July-Aug	S-ltSh	W-M
	'Kobold'	Kobold Blazing Star	violet pink	24	July-Sept	S-ltSh	WM-M
	Linum perenne 'Sapphire'	Blue Flax	blue	10	May-Aug	S	M-D
	Lobelia cardinalis 'Black Truffle'	Cardinal Flower	red	24-40	June-Sept	S	W-M
New!	Lupinus perennis	Lupine	purple	12-24	May-June	S-ltSh	M-D sand
	Monarda fistulosa	Wild Beebalm	pink	36-48	June-Aug	S-ltSh	WM-MD
New!	Oenothera macrocarpa	Evening Primrose	yellow	8-10	May-Sept	S	M-D
	mac. 'Shimmer'	Evening Primrose	yellow	6-10	May-Sept	S	MD-D
	Parthenium integrifolium	Wild Quinine	white	24-36	June-Sept	S-mSh	M-MD
New!	Penstemon cobaea	Showy Beardtongue	white w/ pink lines	12-18	May-June	S	M-D
	Penstemon digitalis	Smooth Penstemon	white	24-36	May-June	S-ltSh	M-MD
	'Husker Red'	Smooth Penstemon	white/pink	24-36	May-June	S-ltSh	M-MD
	Penstemon grandiflorus	Shell-leaf Penstemon	lavender	24-36	May-June	S	MD-D
	'Prairie Snow'	White Shell-leaf Penstemon	white	24-36	May-June	s	M-MD
	'War Axe'	War Axe Penstemon	pink/purple	18-24	May-June	S	MD-D
	Phlox divaricata	Woodland Phlox	blue	10-12	April-May	ltSh-Sh	WM-MD
	'Blue Moon'	Blue Moon Woodland Phlox	blue	12-18	April-May	ltSh-mSh	WM-M
	'Louisiana Blue'	Woodland Phlox	dark blue	10-12	April-May	ltSh-mSh	WM-M
	Phlox pilosa 'Eco Happy Traveler'	Prairie Phlox	pink	15-18	May-July	S-ltSh	WM-D
	Physostegia virginiana 'Pink Manners'	Obedient Plant	pink	30-36	June-Aug	S-ltSh	WM-M
	Podophyllum peltatum	Mayapple	white	15-18	April-May	Sh	WM-MD
	Polygonatum biflorum	Great Solomon Seal	white	24	April-May	Sh	WM-MD
	Pontederia cordata	Blue Pickerel Plant	blue	24	June-Oct	S-ltSh	W-WM
	Pycnanthemum muticum	Short Toothed M.M.	purple/lav	24-30	June-Sept	ltSh-mSh	WM-M
	Pycnanthemum tenuifolium	Slender Mountain Mint	white	20-30	June-Sept	S-ltSh	WM-MD
	Ratibida pinnata	Grey-headed Coneflower	yellow	36-72	July-Sept	S	M-MD
	Rudbeckia maxima	Giant Black-eyed Susan	yellow	60-84	May-July	S	WM-M
	Rudbeckia missouriensis	MO Black-eyed Susan	yellow	12-18	June-Aug	S	WM-MD
	Rudbeckia subtomentosa 'Henry Eilers'	Sweet Coneflower	yellow	36-48	Aug-Sept	S-ltSh	WM-M
	Rudbeckia triloba	Brown-eyed Susan	yellow	24-48	Aug-Oct	S-ltSh	WM-MD
	Salvia azurea	Blue Sage	blue	36-48	Aug-Sept	S	M-D
	'Grandiflora'	Pitcher Sage	blue	36-48	Aug-Sept	S	M-D
	Scutellaria resinosa 'Smoky Hills'	Resinous Skullcap	purple	6-12	May-July	S	M-D
	Silene regia	Royal Catchfly	red	24-40	July-Aug	S-ltSh	M-MD
	Silphium laciniatum	Compass Plant	yellow	48-96	July-August	S	WM-MD
New!	Silphium perfoliatum	Cup Plant	yellow	48-96	July-Aug	S-ltSh	WM-M
	Silphium terebinthinaceum	Prairie Dock	yellow	36-72	August-Sept	S	WM-MD
	Solidago canadensis 'Golden Baby'	Gldn Baby Goldenrod	yellow	18-24	Aug-Oct	S	WM-MD
	Solidago nemoralis	Gray Goldenrod	yellow	12-36	Aug-Oct	S-ltSh	M-D
	Solidago rigida	Stiff Goldenrod	yellow	36-60	Aug-Oct	S	WM-D
	Solidago shortii 'Solar Cascade'	Solar Cascade Goldenrod	yellow	24-30	Aug-Oct	S-ltSh	WM-MD
	Solidago ulmifolia	Elm-leaf Goldenrod	yellow	36	July-Oct	mSh-Sh	M-MD
New!	Sparganium eurycarpum	Great Bur Reed	cream	36-48	June-Aug	S-ltSh	W
	Stylophorum diphyllum	Yellow Wood Poppy	yellow	15	May-July	Sh	WM-MD
New!	Thalictrum dasycarpum	Purple Meadow Rue	cream	48-72	June-July	ltSh-MSh	WM-M
	Tradescantia tharpnii	Shortstem Spiderwort	purple	8-18	March-Apr	S	MD-D
	Verbena canadensis	Rose Verbena	purple/pink	8-18	March-Oct	S	M-D
	Vernonia lettermanii 'Iron Butterflies'	Letterman's Ironweed	purple	30-36	Sept-Oct	S-ltSh	M-MD
	Veronicastrum virginicum 'Lavender Towers'	Culver's Root	lavender	36-72	June-Aug	S-ltSh	WM-M
	Zizia aurea	Golden Alexander	yellow	24-36	April-June	S-ltSh	WM-MD

FERNS

	Athyrium felix-forma 'Lady in Red'	Lady Fern	red stems	30-36	June-Sept	mSh-Sh	WM-M
	Athyrium niponicum 'Pictum'	Japanese Painted Fern	Purple fronds	12-24	June-Sept	mSh-Sh	WM-M
	Dryopteris erythrosora	Autumn Fern	Copper fronds	24-30	June-Oct	mSh-Sh	WM-M

GRASSES

	Andropogon gerardii 'Pawnee'	Pawnee Bluestem	grass	60-72	July-Oct	S	WM-D
	'Indian Warrior'	Indian Warrior Big Bluestem	grass	60-72	July-Oct	S	WM-MD
	Arundo donax 'Golden Chain'	Giant Reed	reed	60-84	July-Oct	S-ltSh	WM-M
	'Peppermint Stick'	Giant Reed	reed	60-84	July-Sept	S-ltSh	WM-M
	Bouteloua gracilis	Blue Grama	grass	12-24	Aug-Oct	S	WM-D
	Calamagrostis x acutifolia						
	'Karl Foerster'	Feather Reed Grass	grass	48-60	August	S-ltSh	WM-MD
New!	Calamagrostis brachytricha	Korean Feather Reed Grass	grass	36-48	Aug-Oct	ltSh-mSh	WM-MD
	Carex amphibola	Creek Sedge	sedge	12	Aug-Oct	S-mSh	WM-MD
	Carex appalachica	Appalachian Sedge	sedge	12	Aug-Oct	ltSh-Sh	WM-M
New!	Carex eburnea	Bristleleaf Sedge	sedge	6	Aug-Oct	ltSh-Sh	WM-MD
New!	Carex grayi	Common Bur Sedge	sedge	24-36	Aug-Oct	S-Sh	W-M
	Carex muskingumensis 'Oehme'	Palm Sedge	sedge	18-24	Aug-Oct	S-ltSh	WM-M
	Carex pennsylvanica	Oak Sedge	sedge	8	May-Oct	m-Sh-Sh	M-MD
New!	Carex siderosticha 'Banana Boat'	Broadleaf Sedge	sedge	6-12	May-Oct	ltSh-Sh	WM-M
	Chasmanthium latifolium	Northern Sea Oats	grass	36	Aug-Oct	S-Sh	WM-MD
	Eragrostis tricoides	Sand Love Grass	grass	36-48	Aug-Oct	S	M-MD
	Hystrix patula	Bottlebrush Grass	grass	24-36	Aug-Oct	ltSh-Sh	M-MD
	Koeleria pyramidata	Junegrass	grass	12-18	May-June	S	WM-MD
	Panicum virgatum						
	'Cheyenne Sky'	Red switchgrass	grass	24-36	June-Oct	S	WM-MD
	'Dallas Blues'	Blue Switchgrass	grass	48-70	July-Oct	S	WM-D
	Pennisetum alopecuroides						
	'Burgundy Bunny'	Red-leaf Fountain Grass	grass	12-16	June-Oct	S	WM-MD
	'Desert Plains'	Fountain Grass	grass	36-48	June-Oct	S	WM-MD
	'Hameln'	Dwarf Fountain Grass	grass	12-18	Aug-Oct	S-ltSh	WM-MD
	'Little Bunny'	Miniature Fountain Grass	grass	6-12	Aug-Sept	S	WM-MD
	'Red Head'	Red Head Fountain Grass	grass	36-48	June-Oct	S	WM-MD
	Schizachyrium scoparium Blaze'	Blaze Little Bluestem	grass	12-24	July-Oct	S	M-D
	'Blue Heaven'	Blue Heaven Little Bluestem	grass	42-54	July-Oct	S	M-D
	Sorghastrum nutans	Indiangrass	grass	48-60	July-Oct	S	WM-D
	Sporobolus heterolepis	Prairie Dropseed	grass	12	June-Oct	S-ltSh	WM-D

What to Plant When Water is Restricted?

By Scott Vogt, Executive Director/Horticulturist

If the well runs dry, we can't drink. If water is restricted, plants will suffer. Reservoirs are low and the Equus Beds Aquifer is shrinking but we continue to need water.

What happens when cities restrict water usage? What can we do to conserve water? What do homeowners and businesses do with the investments they have made in their landscapes?

These questions are not easy to solve, but choosing plants that require less water can be part of the answer. We can't continue to plant water-thirsty plants. Here are some of my favorite plants, available at our spring plant sale, for water-conscious gardeners:

1 Agastache 'Bolero' is a new long-blooming Hummingbird Mint with vivid rose-purple flower spikes from mid-summer into fall. Great for attracting pollinators to the landscape. They love sun and will flourish in spite of the heat.

2 *Amsonia hubrichtii* is one of the most under-used perennials at our plant sales. It provides three seasons of interest starting with blue star-like blooms in spring atop stems of narrow, dark, green leaves. It reaches 2-3 feet tall and 2-3 feet wide. In the fall, the entire plant turns a nice butter-yellow.

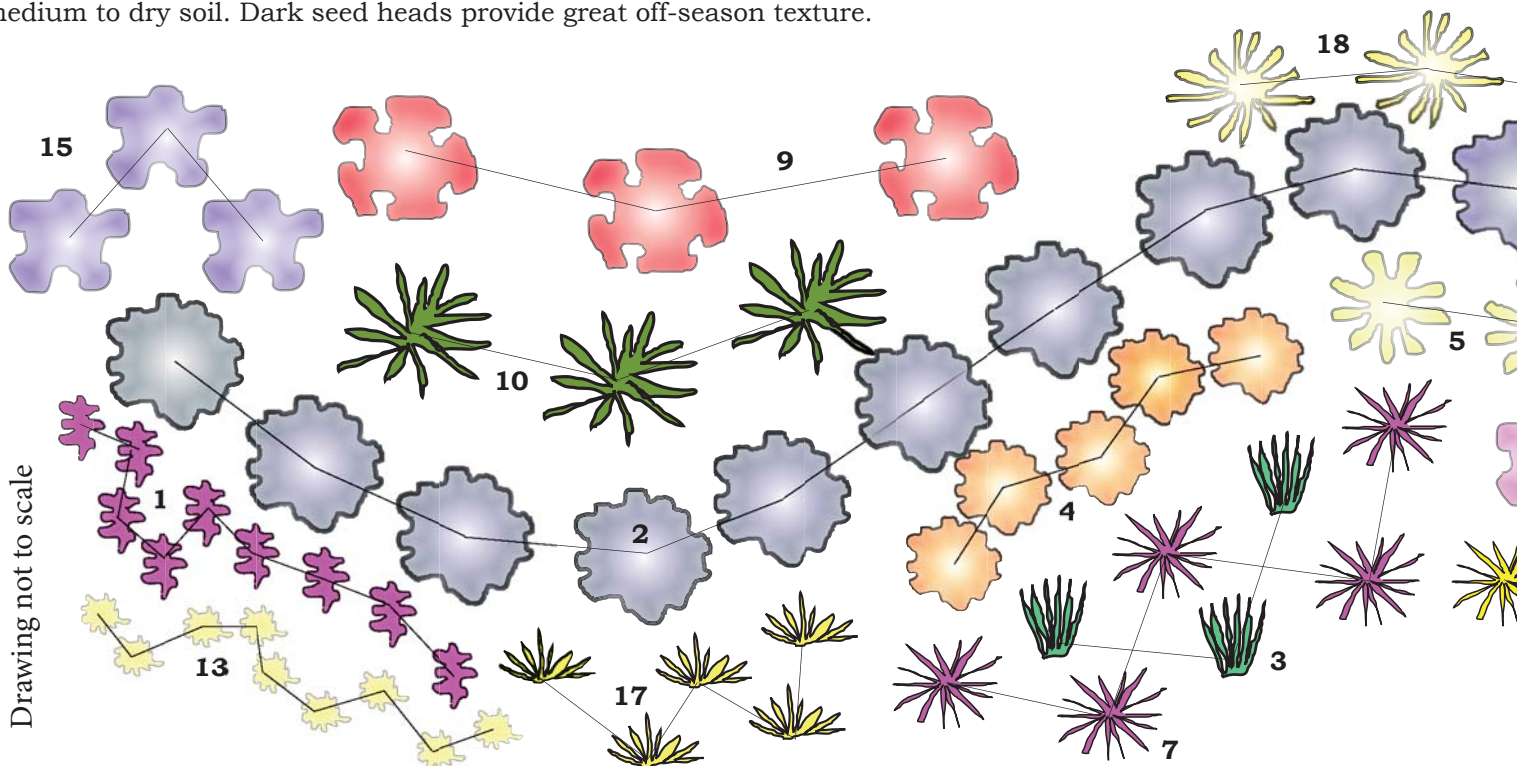
3 Grasses should be used more in the landscape. Try new forms of little bluestem 'Blue Heaven' or 'Standing Ovation'. They are upright, reach 3-4 feet, and turn burgundy red in the fall.

4 You can't go wrong with Butterfly Milkweed. The bright orange flowers make this the most recognizable wildflower on the prairie. It loves full sun and flourishes in dry conditions.

5 'Full Moon' Coreopsis is one of my favorite new plants. It blooms from May through October with huge 3" diameter flowers in shades of canary yellow. It can be grown in full sun or partial shade.

6 'Mercury Rising' Coreopsis is a truly hardy, red Coreopsis. The velvety-wine, red blooms keep coming all summer on plants that have a mounded habit. Plant them in full sun or partial shade.

7 Coneflowers should be in every native landscape. Choose *Echinacea pallida* for the long narrow drooping pink ray petals or **(8)** *Echinacea paradoxa* for the long, drooping, yellow ray petals. Each of these coneflowers can grow 3 feet tall and blooms in May and June. Give them plenty of sun and a medium to dry soil. Dark seed heads provide great off-season texture.



9 There are many great rose varieties to try, and I have had success with a rose called 'Home Run'. It has brick red flowers from May–October on plants that reach 3 feet tall and 3 feet wide. The foliage is disease-resistant, too.

10 If you need a vertical plant for the landscape, Panicum 'Northwind' is great. It is stiffly upright with blue-green foliage that develops airy panicles in the fall. Mature height is 4-5 feet.

11 This tame Ironweed, Vernonia 'Iron Butterflies' has narrow foliage topped with violet flowers in late summer. It is less than 2 feet tall and very resilient.

12 A great spring-blooming wildflower is Penstemon 'Dark Towers'. The tubular blooms are whitish-pink and attract many different pollinators. The purple-red foliage adds interest throughout the year. Plant them with Missouri Evening Primrose (**13**) for an attractive spring combination.

Try these compact asters for late season bloom. Aster KICKIN 'Lavender' (**14**), 'Lilac Blue' (**15**), and 'Pink Chiffon' (**16**) bloom from September into October. They each form bushy mounds 18-24 inches wide. Another excellent fall-blooming plant is the goldenrod Solidago 'Little Lemon' (**17**).

18 *Silphium terebinthinaceum* has nice foliage and flowers with large leaves up to 2 feet long and a tall spike of yellow flowers in summer.

Larger pictures and detailed descriptions along with companion plants can be viewed on our Facebook page and Website.

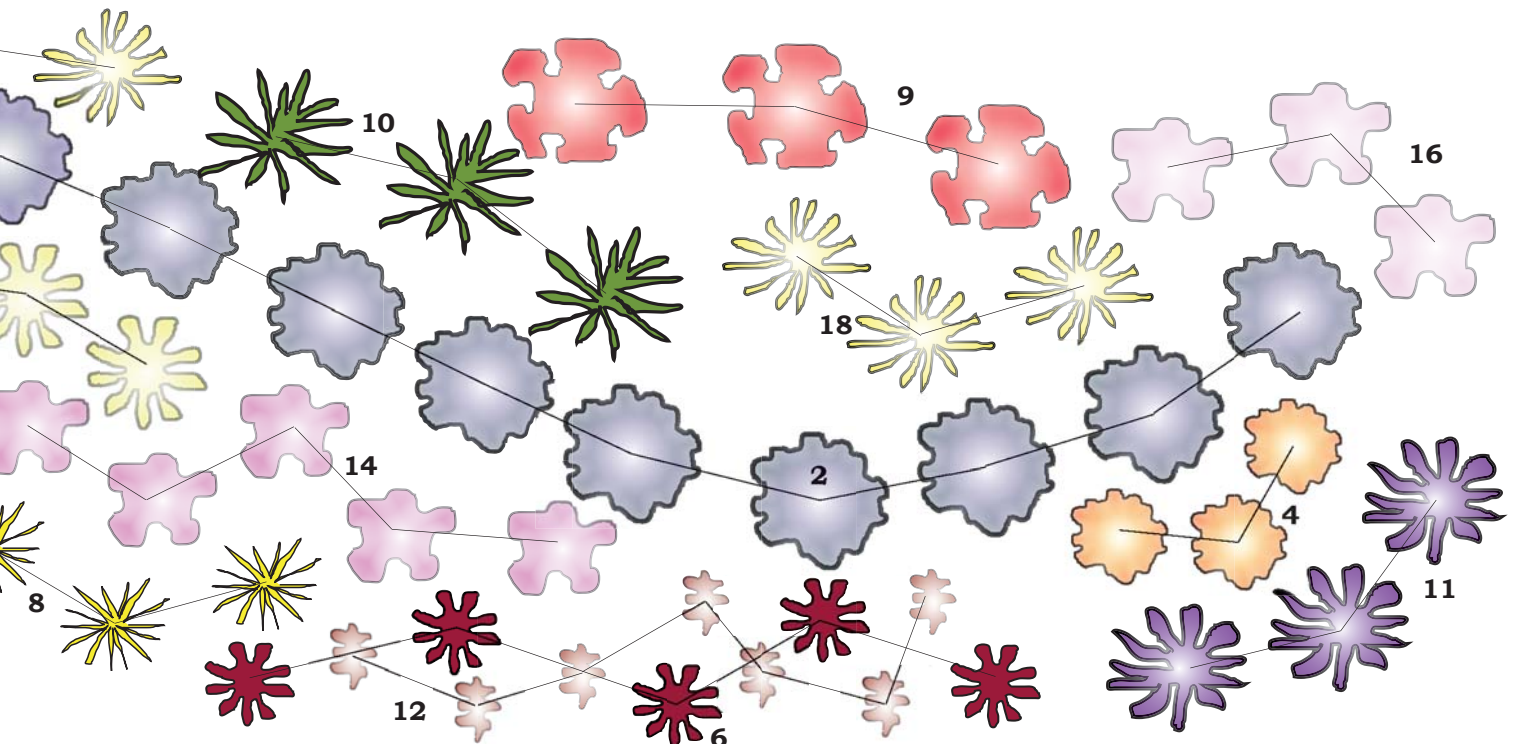


A Cut and Paste Landscape

By Scott Vogt, Executive Director/Horticulturist

Designing a new garden can be difficult. It takes time and inspiration to land on a design that beautifies your space. If you have seen a design that you like, note the appearance of the mature plants including size, form, and bloom times. For year-round interest, have plants that are coming into bloom and going out of bloom throughout the year. Consider plant combinations you like from the arboretum gardens and use them as a starting point to make your own design statement. The design below can be used as a model for your full-sun garden. The ultimate goal is plantings that are dynamic, aesthetically pleasing, and sustainable.

Please bring your ideas and questions to the upcoming Dyck Arboretum plant sale or attend one of the landscaping classes. At the sales or classes, staff, master gardeners, and volunteer gardeners will help you find the plants you want and advise you on plant combinations. We want you to be successful and help you choose the best plants to create your own sustainable landscape, to establish inviting habitats for birds and pollinators, and to reduce your water and chemical needs in the process.



SHRUBS

New!	Amelanchier canadensis 'Glennform'	Rainbow Pillar Serviceberry	white	20' X 8-10'	April-May	ItSh-mSh	WM-M
	Amelanchier x grandiflora 'Autumn Brilliance'	Serviceberry	white	10'-15'X10'-15'	April-May	ItSh-mSh	WM-M
	Amorpha canescens	Leadplant	purple	24-36	June-July	S	M-D
	Amorpha nana	Fragrant False Indigo	purple	12-36	May-June	S	M-D
	Aronia melanocarpa 'Morton'	Iroquois Beauty Black Chokeberry	white fl w/blk fruit	24-48	May-June	S-mSh	WM-M
New!	Aronia melanocarpa 'Viking'	Viking Chokeberry	white fl w/blk fruit	36-60	May-June	S-mSh	WM-M
	Buddleia x Lo & Behold 'Blue Chip'	Blue Chip Butterfly Bush	lavender	24-30	June-Sept	S	M
	Lo & Behold 'Ice Chip'	Ice Chip Butterfly Bush	white	18-24	June-Sept	S	M
	Lo & Behold 'Lilac Chip'	Lilac Chip Butterfly Bush	lavender-pink	18-24	June-Sept	S	m
	Lo & Behold 'Purple Haze'	Purple Haze Butterfly Bush	dark purple	24-36	June-Sept	S	MNew
	Callicarpa americana	American Beautyberry	purple fruit	36-48	Fall Fruit	S-ItSh	WM-M
	Caryopteris x Clandonesis 'Janice'	Lil' Miss Sunshine Spirea	blue	24-36	Aug-Oct	S	M-MD
	'Minibleu', 'Petit Bleu'	Compact Blue Mist Spirea	blue	20-24	Aug-Oct	S	M-MD
	Caryopteris incana 'Sunshine Blue'	Golden Blue Mist Spirea	blue	36	Aug-Sept	S	M-MD
	Cephalanthus occidentalis	Buttonbush	white	72-84	July-Aug	S-ItSh	W-M
	'Sugar Shack'	Buttonbush	white	36-48	July-Aug	S-ItSh	W-M
	Corylus americana	American Hazelnut	brown	72-96	April	S-ItSh	WM-MD
	Cotinus 'Grace'	Grace Smokebush	pink	15' X 8'	June-July	S-ItSh	WM-MD
	'Young Lady'	Young Lady Smokebush	tan/green	8' X 8'	June-Sept	S-ItSh	WM-MD
	Diervilla sessilifolia 'LPDC Podaras'	Cool Splash Dwarf Bush Honeysuckle	yellow	30-54	June-July	ItSh-mSh	WM-M
	Fallugia paradoxa	Apache Plume	pink	48-60	May-Sept	S	M-MD
	Hamamelis vernalis	Vernal Witchazel	yellow	72-120	Jan-Feb	S-mSh	WM-MD
	Heptacodium miconioides	Seven Son Flower	white	10-15'	Aug-Oct	S-ItSh	WM-M
	Hydrangea arborescens						
	'Abetwo'	Incrediball Hydrangea	white	48-60	Jun-Sept	ItSh-mSh	WM-M
	Hydrangea quercifolia	Oakleaf Hydrangea	white	48-72	May-June	ItSh-Sh	WM-M
	'Little Honey'	Golden Oakleaf Hydrangea	white fls w/ red FC	36-48	June-Aug	ItSh-Sh	WM-M
New!	'Ruby Slippers'	Ruby Blooming Hydrangea	ruby	36	June-Aug	ItSh-Sh	WM-M
	'Sikes Dwarf'	Dwarf Oakleaf Hydrangea	white	36-48	June-Aug	ItSh-Sh	WM-M
	'Snow Queen'	Snow Queen Oakleaf Hydrangea	white	7-8'	June-Aug	ItSh-Sh	WM-M
	Lagerstromieia indica 'Whit 2'	Dynamite Crapemyrtle	true red	24-48	July-Sept	S	M-MD
	'Whit 3'	Pink Velour Crapemyrtle	flashy pink	24-48	July-Sept	S	M-MD
	'Whit 4'	Red Rocket	cherry red	24-48	July-Sept	S	M-MD
	Lindera benzoin	Spicebush	red fruit ylw FC	6-12'	July-Oct	S-mSh	WM-M
New!	Magnolia 'Royal Star'	Royal Star Magnolia	white	10'-15'	May-June	S-ItSh	WM-M
	Myrica pensylvanica	Northern Bayberry	gray fruit	6-8'	June-Sept	S-mSh	WM-M
	Physocarpus opulifolius 'Coppertina'	Copper Ninebark	white	60-96	May-June	S-ItSh	WM-M
	'Center Glow'	Center Glow Ninebark	white	60-96	May-June	S-ItSh	WM-M
	'Dart's Gold'	Golden Ninebark	white	48-60	May-June	S-ItSh	WM-M
New!	'Little Devil'	Little Devil Ninebark	white	36-48	May-June	S-ItSh	WM-M
	'Summer Wine'	Summer Wine	white	60-72	May-June	S-ItSh	WM-M
	Prunus besseyi 'Pawnee Buttes'	Western Sand Cherry	white	12-15	May-June	S	M-MD
	Prunus virginiana 'Shubert Select'	Canada Red Cherry	white	20' X 20'	May-June	s-ItSh	WM-MD
	Rhus aromatica 'Gro-Low'	Gro-Low Fragrant Sumac	yellow	24-48	May-June	S-ItSh	WM-MD
	Rhus typhina 'Tiger Eyes'	Tiger Eyes Ctlf Sumac	yellow leaves	60-72	Aug-Sept	S-ItSh	WM-MD
	Ribes odoratum 'Crandall'	Clove-scented Currant	yellow	36-60	April-May	ItSh-mSh	WM-M
	Rosa 'BAIrage'	All the Rage Rose	coral apricot	24-48	April-Sept	S-ItSh	WM-MD
	'Home Run'	Home Run Rose	dark red	36-48	May-Oct	S-ItSh	WM-MD
	'Pink Home Run'	Pink Home Run Rose	pink	36-48	May-Oct	S	WM-MD
New!	'Radsun'	Carefree Sunshine Yellow Rose	yellow	36-48	May-Oct	S-ItSh	WM-MD
	'RADtko'	Double Knock Out Rose	dbl red	36-48	May-Oct	S-ItSh	WM-MD
	Sambucus canadensis 'Adams'	Adams Elderberry	white	8' X 8'	June-July	S-mSh	W-M
	'York'	York Elderberry	white	8' X 8'	June-July	s-mSh	W-M
	Sambus nigra 'Eva'	Black Lace Elderberry	white/pink	6-8'	June-July	S-mSh	WM-M
	Salix chaenomeloides 'Mt. Asama'	Pink Pussy Willow	pink	8-10' X 8-10'	April-May	S-ItSh	W-M
	Syringa x 'Penda'	Bloomerang Lilac	repeating purple	48-60	May, June-Sept	S-ItSh	WM-M
New!	Syringa x 'SMSJBP7'	Bloomerang Dark Purple Lilac	repeating dk purple	48-72	May-Sept	S-ItSh	WM-M
New!	Syringa x 'SMSXPM'	Scent and Sensibility™ Pink Lilac	pink	24-36	May-Sept	s-ItSh	WM-M
	Viburnum bracteatum						
	'SMVDLS'	All That Glitters Viburnum	white	48-60	May-June	S-mSh	WM-M
New!	'SMVDBL'	All That Glows Viburnum	white	48-60	May-June	S-mSh	WM-M
	Viburnum dentatum 'Blue Muffin'	Blue Muffin Viburnum	white	5' X 7'	May	S-mSh	WM-M
	Viburnum dilatatum 'Henneke'	Cardinal Candy Viburnum	white	5' X 7'	May	S-mSh	WM-M
	Viburnum prunifolium	Blackhaw Virburnum	white	8' X 12'	May-June	S-ItSh	WM-M
	Viburnum x rhytidophylloides						
	'Allegheny'	Leather-leaf Viburnum	white	8' X 10'	May-June	S-ItSh	WM-M
	'Dart's Duke'	Leather-leaf Viburnum	white	6' X 8'			
	'Redell'	Red Balloon Viburnum	white	6-8' X 6-8'	April-May	S-ItSh	WM-MD
	Viburnum rufidulum	Rusty Blackhaw Viburnum	white	10' X 20'	May-June	S-It Sh	WM-MD

VINES

	Bignonia capreolata	Cross Vine	re/orange	vine	May-June	S-ItSh	WM-M
	Celastrus scandens 'Bailumn'	Autumn Revolution Bittersweet	fall red berries	vine	Aug-Oct	S-Sh	WM-MD
New!	Clematis 'Sweet Summer Love'	Sweet Summer Love Clematis	red/violet	vine	Aug-Sept	S-ItSh	WM-M
	Hydrangea petiolaris	Climbing Hydrangea	white	vine	June-July	S-Sh	WM-M
	Lonicera reticulata 'Kintzley's Ghost'	Grape Honeysuckle	yellow	vine	May	S-ItSh	WM-MD
	Lonicera sempervirens 'Major Wheeler'	Trumpet Honeysuckle	red	vine	May-Aug	S-mSh	WM-M
	Vitis coignetiae	Crimson Glory Vine	brilliant red fall color	vine	Sept-Oct	S-mSh	WM-M

TREES

New!	Acer saccharum 'Apollo'	Upright Maple	w/red fall color	30' X 25'	Oct-Nov	S-mSh	WM-M
	Asimina triloba	Pawpaw Tree	brown	20'	April-May	S-Sh	WM-MD
	Cercis canadensis	Redbud	pink	20-30 X 25-35'	April-May	S-mSh	WM-MD
	Cladrastis kentuckea	Yellowwood	white	30'-40'X30'-40'	May	S-ItSh	WM-M
	Ostrya virginiana	Ironwood	white	30-50' x 25'			
	Populus tremuloides 'NE-Arb'	Prairie Gold Quaking Aspen	golden yellow fall color	30' X 15'		S-ItSh	WM-M
	Quercus alba	White Oak	red fall color	60-80' X 60-80'		S-ItSh	WM-MD
	Quercus macrocarpa	Bur Oak	great shade tree	60-80' X 60-80'		S-ItSh	WM-MD
	Tilia americana 'Bailyard'	Frontyard Linden	yellow FC	60-75' X 40'		S-ItSh	WM-M
	Tilia cordata 'Greenspire'	Greenspire Littleleaf Linden	yellow FC	40' X 30'	May-June	S-ItSh	WM-M
	Zelkova serrata 'Green Vase'	Green Vase Zelkova	bronze red FC	60' X 35' Vase Shaped		S-ItSh	WM-M

TEMPERENNIALS

	Aristolochia littoralis 'Elegans'	Dutchman's Pipe	maroon	12'	June-Aug	S-ltSh	M-M
	Asclepias curassavica	Bloodflower	orange-red	36	June-Oct	S-ltSh	WM-M
New!	Cleome serrulata	Rocky Mtn. Bee Plant	pink	24-48	July-Aug	S	M-MD
New!	Colocasia esculenta 'Black Cora'	Royal Hawaiian Elephant Ears	purple leaves	36-60		S-ltSh	M-MD
	Colocasia gigantea 'Thailand Giant'	Thailand Giant Elephant Ears	large leaves	9'		S-lt Sh	M-MD
	Gaillardia aristata 'Arizona Red Shades'	Blanket Flower	red	10-12	May-Sept	S	M-MD
New!	'Arizona Apricot'	Blanket Flower	yellow/orange	12	June-Oct	S	M-MD
	'Fanfare Blaze'	Blanket Flower	fluted red	12-16	June-Oct	S	M-MD
	Pennisetum setaceum rubrum						
	'Fireworks'	Purple Fountain Grass	grass	24-30	July-Sept	S-ltSh	WM-M
New!	Salvia elegans 'Golden Delicious'	Pineapple Sage	red	36-48	June-Sept	S	WM-MD

ADAPTABLE PERENNIALS

New!	Agastache 'Blue Boa'	Hummingbird Mint	violet blue	24-30	June-Sept	S	M-MD
New!	Agastache 'Raspberry Summer'	Hummingbird Mint	dark pink	30	June-Sept	S	M-MD
New!	Agastache 'Summer Fiesta'	Hummingbird Mint	orange red	25	June-Sept	S	M-MD
	Ajuga 'Black Scallop'	Bugleweed	violet	6-8	June-Sept	S-Sh	WM-M
	Alchemilla mollis	Lady's Mantle	yellow/green	18-24	May-June	S-mSh	WM-M
	Angelica gigas	Angelica	purple	48	July-Aug	S-ltSh	WM-M
New!	Aquilegia 'Blue Bird'	Blue Songbird Columbine	blue/white	20-30	April-May	ltSh-mSh	M
	Aquilegia 'Crimson Star'	Red Columbine	red	24	May-June	S-mSh	M
New!	Aquilegia 'Dove'	White Songbird Columbine	white	20-26	April-May	S-mSh	M-MD
	Aquilegia chrysantha	Yellow Columbine	yellow	18-24	April-May	S-ltSh	M-MD
	Aster divaricatus 'Eastern Star'	White Woodland Aster	white	18-24	Aug-Oct	mSh-Sh	WM-MD
New!	Aster 'Oudshoorn1'	Blue Autumn Aster	violet blue	20-24	Aug-Oct	S	WM-MD
	Aster KICKIN 'Lavender'	Fall Aster	lavender	24-36	Sept-Oct	S-ltSh	WM-MD
	Aster KICKIN 'Lilac Blue'	Fall Aster	blue	24-36	Sept-Oct	S-ltSh	WM-MD
	Aster KICKIN 'Pink Chiffon'	Fall Aster	pink	24-26	Sept-Oct	S-ltSh	WM-MD
	Brunnerna macrophylla	Heartleaf Brunnera	light blue	12-18	May-June	mSh-Sh	WM-M
	'Jack Frost'	Heartleaf Brunnera	light blue	12-15	May-June	mSh-Sh	WM-M
New!	Centranthus ruber 'Pretty Betsy'	Red Valerian	red	24-36	June-Aug	S	M-MD
	Ceratostigma plumbaginoides	Plumbago	blue	6-8	July-Sept	S-mSh	WM-M
New!	Chrysanthemum 'Harmony'	Hardy Garden Mum	yellow	18-24	Aug-Oct	S-ltSh	WM-M
New!	Chrysanthemum 'Matchsticks'	Hardy Garden Mum	yellow red	18-24	Aug-Oct	S-ltSh	WM-M
	Convallaria majalis 'Bordeaux'	Lily of the Valley	white	6-8	May-June	ltSh-Sh	WM-M
New!	Coreopsis 'Cosmic Eye'	Tickseed	yellow w/ red eye	12-15	June-Sept	S-ltSh	WM-MD
	Coreopsis 'Full Moon'	Tickseed	yellow	24-30	June-Sept	S-ltSh	WM-MD
	Coreopsis 'Jethro Tull'	Tickseed	red	15-18	May-Oct	S-ltSh	WM-MD
New!	Coreopsis 'Mercury Rising'	Tickseed	yellow/red	30-36	May-Aug	S-ltSh	WM-MD
	Coreopsis 'Star Cluster'	Tickseed	white/purple eye	18-24	June-Sept	S-ltSh	WM-M
New!	Delesperma cooperi	Ice Plant	rose pink	3-6	June-Aug	S	MD-D
New!	Delosperma 'P001S'	Fire Spinner Hardy Ice Plant	orange/red/pink	1-2	May-Aug	S	MD-D
	Dianthus 'Firewitch'	Cheddar Pinks	hot pink	7-8	May-June Sept	S	M-MD
	Dicentra 'Gold Heart'	Golden Bleeding Heart	rose pink	18-24	May-June	mSh-Sh	WM-M
	Dicentra 'Valentine'	Bleeding Hearts	rose pink	8-10	May-Sept	mSh-Sh	WM-M
	Echianacea 'Hot Papaya'	Red Pom-pom Coneflower	red-orange	30-36	June-Aug	S-ltSh	M-MD
	'Solar Flare'	Solar Flare Coneflower	magenta red	24-36	June-Aug	S-ltSh	M-MD
	Echinacea 'Pixie Meadowbrite'	Purple Coneflower	pink	24-30	June-August	S-ltSh	M-MD
	Echinacea Big Sky 'Sunrise'	Yellow Coneflower	yellow	30-36	June-August	S	M-MD
	Epimedium grandiflorum 'Lilafee'	Barrenwort	purple	8-12	April-May	ltSh-Sh	WM-MD
New!	Eupatorium dubium 'Little Joe'	Dwarf Joe Pye Weed	pink	36-48	June-Aug	S-ltSh	WM-M
New!	Euphorbia amygdaloides var. robbiae	Wood Spruce	yellow	12-18	May-June	ltSh-mSh	WM-MD
	Euphorbia polychrome						
	'Bonfire'	Cushion Spurge	yellow	12-18	July-Sept	S	M-MD
	Gallium odoratum	Sweet Woodruff	white	8-12	April-May	mSh-S	WM-M
New!	Geranium 'Dragon Heart'	Hardy geranium	purple	18-24	June-Sept	S-ltSh	WM-M
	Geranium sanguineum						
	'New Hampshire Purple'	Bloody Crane's Bill	purple	12-18	May-June	S-ltSh	WM-MD
	Geranium 'Roanne'	Hardy geranium	violet/blue	18-20	May-Sept	S-ltSh	WM-M
	Gypsophila 'Festival Star'	Baby's Breath	white	12-18	May-Sept	S-ltSh	M-MD
	Hedra helix 'Bulgaria'	Ivy	groundcover	12	Sept-Nov	ltSh-Sh	WM-MD
	Helianthus 'Happy Days'	Dwarf Sunflower	yellow	24-30	Aug-Oct	S	WM-M
New!	Helenium 'Double Trouble'	Helen's Flower	yellow	24-30	Aug-Sept	S-ltSh	WM-M
	Helenium 'Mardi Gras'	Helen's Flower	yellow-orange	36-40	Aug-Sept	S-ltSh	WM-M
New!	Helenium 'Red Jewel'	Helen's Flower	red	30-36	Aug-Sept	S-ltSh	WM-M
New!	Helenium 'Ruby Tuesday'	Helen's Flower	red	24-36	Aug-Sept	S-ltSh	WM-M
	Hemerocallis 'Bright Sunset'	Daylily	orange	36	June-Aug	S-ltSh	M
	'Hyperion'	Daylily	yellow	36-40	June-Aug	S-ltSh	M
	'Joan Senior'	Daylily	white	28-30	June-Aug	S-ltSh	M
	'Little Grapette'	Daylily	purple	12	June-Aug	S-ltSh	M
	'Nosferatu'	Daylily	deep purple	26	June-Aug	S-ltSh	M
	'Rosy Returns'	Daylily	rose pink	14	June-Aug	S-ltsh	M
	Heuchera americana						
	'Marvelous Marble'	Coral Bells	cream white	8-12	May	ltSh-mSh	M
	Heuchera 'Autumn Leaves'	Coral Bells	red foliage	8-15	May-Nov	ltSh-mSh	M
New!	'Bella Notte'	Coral Bells	purple red foliage	9-12	May-NOV	ltSh-mSh	M
	'Berry Smoothie'	Coral Bells	gold/lime	8-12	May-Oct	S-mSh	M
	'Delta Dawn'	Coral Bells	cream	8-10	May-June	S-mSh	M
	'Electra'	Coral Bells	golden foliage	8-14	May-Oct	S-mSh	M
	'Electric Lime'	Coral Bells	lime green foliage	12-28	May-Oct	S-mSh	M
New!	'Galaxy'	Coral Bells	red w/ pink spots	9-12	May-Oct	S-mSh	M
New!	Georgia Peach'	Coral Bells	cream	14	May-June	S-mSh	M
	'Obsidian'	Coral Bells	dark foliage	10	May-Oct	S-mSh	M
New!	'Southern Comfort'	Coral Bells	tan/peach	12-14	May-Oct	S-mSh	M
	Heucherella						
	'Golden Zebra'	Foamy Bells	golden foliage	10-15	May-Oct	ltSh-mSh	WM-M
	'Redstone Falls'	Foamy Bells	groundcover red orange foliage	10	May-June	ltSh-mSh	M
	'Solar Eclipse'	Foamy Bells	cream	10-16	May-June	ltSh-mSh	M
	'Solar Power'	Foamy Bells	cream	12-20	May-June	ltSh-mSh	M
	'Yellowstone Falls'	Foamy Bells	groundcover chartreuse foliage	6	May-June	ltSh-mSh	WM-M
New!	Iberis 'Absolutely Amethyst'	Evergreen Candytuft	amethyst purple	10-12	May-June	S	M-MD
	Iris 'Before the Storm'	Bearded Iris	black/purple	36	May-June	S	WM-MD
	'Fortunate Son'	Bearded Iris	purple red	30-36	May-June	S	WM-MD

New!	'Lace Artistry'	Bearded Iris	peachy pink	36	May-June	S	WM-MD
	'Lovely Senorita'	Bearded Iris	gold/orange	40	May-June	S	WM-MD
	'Millenium Sunrise'	Bearded Iris	apricot	36	May-June	S	WM-MD
	'Red Hawk'	Bearded Iris	deep red	36	May-June	S	WM-MD
	Knautia macedonica						
	'Mars Midget'	Pincushion Flower	red	24-36	May-Aug	S	M-MD
	Lamiastrum galeobdolon						
New!	'Herman's Pride'	Silver Nettle	yellow	6-8	May-June	S-Sh	WM-MD
	Lavandula 'Phenomenal'	Lavender	lavender	24-48	June-Sept	S	M-D
	Lespedeza thunbergii 'Samindare'	Pink Bush Clover	pink	36-48	Aug-Sept	S-Itsh	WM-MD
	Leucanthemum superbum 'Daisy May'	Shasta Daisy	white	12-24	June-Aug	S-ItSh	M-MD
	'Highland White Dream'	Shasta Daisy	white	24-28	June Aug	S-ItSh	M-MD
	Leucanthum vulgare	Ox-eyed Daisy	white	24-36	June-Aug	S-ItSh	M-MD
New!	Monarda didyma 'Purple Rooster'	Bee Balm	royal purple	30-36	June-Aug	S-ItSh	WM-M
	Monarda didyma 'Pardon My Pink'	Bee Balm	pink	10-12	June-Aug	S-ItSh	WM-M
New!	Monarda didyma 'Pardon My Purple'	Bee Balm	purple	10-12	June-Aug	S-ItSh	WM-M
New!	Monarda 'Jacob Cline'	Red Bee Balm	red	24-36	June-Aug	S-ItSh	WM-M
	Nepeta x fassenii 'Walker's Low'	Catmint	lt. blue	10-15	May-Sept	S-ItSh	M-MD
	Paeonia 'Bartzella' \$40/ plant	Peony	yellow	30-36	May-June	S-ItSh	WM-MD
New!	Paeonia 'Karl Rosenfield'	Peony	fuchsia red	32	May-June	S-Itsh	WM-MD
	Penstemon 'Dark Towers'	Beardtongue	pink	30	May-June	S-ItSh	M-MD
	Phlox subulata 'North Hills'	Creeping Phlox	violet purple				
	Perovskia atriplicifolia	Russian Sage	lavender/blue	48	May-Aug	S	M-MD
	'Little Spire'	Russian Sage	lavender/blue	24	May-Aug	S	M-MD
	Polygonatum multiflorum						
	'Variegatum'	Var. Solomon's Seal	white	24	May-June	mSh-Sh	WM-M
	Rubus calycinoides	Creeping Raspberry	white	6	April-May	s-ItSh	WM-M
New!	Salvia greggii 'Furman's Red'	Furman's Red Sage	red	18-24	Aug-Sept	S	M-MD
	Salvia greggii 'Ultra Violet'	Ultra Violet Autumn Sage	Violet purple	18-20	Aug-Sept	S	M-MD
New!	Salvia X nemerosa 'May Night'	May Night Salvia	dark purple	18	May-June	S	M-MD
	'Caradonna'	Caradonna Sage	dark purple	18-30	May-June	S	M-MD
	Saponaira x oliviana	Soapwort	pink	2-6	May-June	S	M-MD
	Scabiosa columbaria						
	'Beaujolais Bonnets'	Pincushion Flower	burgundy	20-24	May-Oct	S-ItSh	M-MD
	'Butterfly Blue'	Pincushion Flower	lavender/blue	12-18	May-Oct	S-ItSh	M-MD
	Sedum 'Autumn Fire'	Autumn Stonecrop	rosy pink	24-30	Aug-Oct	S	M-MD
New!	Sedum 'Dazzleberry'	Stonecrop	pink	6-8	Aug-Sept	S	M-D
New!	Sedum 'Lime Zinger'	Stonecrop	rose red	4-6	Aug-Oct	S	M-D
New!	Sempervivum 'Silverine'	Hens and Chicks	red silver leaves	3-4	May-Oct	S	M-D
	Solidago 'Little Lemon'	Dwarf Goldenrod	yellow	8-10	Sept-Oct	S	M-MD
	Solidago rugosa 'Fireworks'	Fireworks Goldenrod	yellow	36-48	Sept-Oct	S	WM-MD
	Solidago 'Wichita Mountain'	Wand Goldenrod	yellow	24-30	Sept-Oct	S	WM-M
	Stachys officinalis 'Pink Cotton Candy'	Cotton Candy Betony	pink	12	June-Aug	S-Itsh	M-MD
	Tanacetum niveum	Snowy Tansy	white	18	May-July	S	M-MD
	Tradescantia 'Red Cloud'	Spiderwort	rose purple	15-18	June-Sept	S-ItSh	WM-MD
	Veronica 'Hocus Pocus'	Spike Speedwell	violet	16-20	June-July	S-mSh	WM-M
	Vinca minor 'Honeydew'	Periwinkle	pale blue	6-8	May-June	S-Sh	WM-MD
	'Illumination'	Periwinkle	blue	4-6	May-June	S-Sh	WM-MD

VARIOUS HOSTAS:

Ann Kulpa, Autumn Frost, Big Daddy, Blue Angel, Blue Mammoth, Blue Mouse Ears, Cathedral Windows, Choo Choo Train, Devon Green, Empress Wu, Faith, Fire Island, First Frost, Great Arrival, Guacamole, Hadspen Blue, Halcyon, June, June Fever, Praying Hands, Ripple Effect, sieboldiana 'Elegans', Queen of the Seas, St. Paul, Tokudama Aureonebulosa, Tokudama Flavocircularis, The Shining, Titanic, Wheaton Blue

A great selection of herbs will be available from the Neff Family Farm at the FloraKansas Plant Sale.

Plant list subject to change.

FloraKansas 2013 Plant Prices
(tax not included)

Plants	Non-Member Price	Member Price
	(Each)	(Each)
Pot Size		
2 1/2"	\$3.95	\$3.35
perennials and vines		
3 1/2" - 4"	\$5.25	\$4.70
perennials and vines		
6"-1 gallon	\$12.00	\$10.80
perennials and vines		
6" Hostas	\$14.00	\$12.60
Proven Winner Shrubs	\$12.00	\$10.80
1 gallon trees & shrubs	\$12.00	\$10.80
2 gallon trees & shrubs	\$17.00	\$15.30
3-5 gallon trees	\$22.00	\$19.80

Schedule-2013 FloraKansas: The Great Plains Plant Bazaar

- Thursday, April 25, 1 - 7 PM-*Members Only*
- Friday, April 26, 8 AM - 7 PM- Public Sale
- Saturday, April 27, 8 AM - 2 PM-Public Sale
- Sunday, April 28, Noon - 4 PM-Public Sale
- Monday, April 29, 8 AM - 6 PM-Public Sale

Prairie Landscape Consultation

Prairie landscape consultation is available at Dyck Arboretum on both small and large scales. For homeowners and businesses, we'll provide designs that are diverse and provide color throughout the seasons. Costs: Initial consultation \$50, \$40/hr design time, plus mileage. Typical designs take 2-5 hours. Limit 10 designs for spring.



For larger native or reconstructed prairies, we can also assess your land for exotic species management or woody tree control (cost: \$50). Prescribed burning services to help landowners develop an action plan

for prescribed burning and assistance with the burn are also available. Cost: starting at \$300 and may be more depending on the size of the property. For more information call (620) 327-8127.



for prescribed burning and assistance with the burn are also available. Cost: starting at \$300 and may be more depending on the size of the property. For more information call (620) 327-8127.

The Dying Weeping Willow: Icon of the Dyck Arboretum

by Janelle Flory Schrock, Office Manager

For most visitors of the Dyck Arboretum, the great willow on the north bank of the pond is an integral part of our landscape. It has been a favorite spot for picnics and playing by the pond, for proposals and wedding ceremonies. The meadow surrounding its trunk is a great place for kids to fly kites and run around.

Planted early in the life of the arboretum, it has stood alone in the meadow, weathering wind and ice and snow for 30 years. Arboretum co-founder, Evie Dyck used to sit on the grassy knoll directly to the north of it, because it was her favorite view of the landscape.

Arboretum Executive Director and Horticulturist Scott Vogt recalls times when children would grab handfuls of the willow branches and braid them, or use them to swing out over the pond, sometimes at risk of getting wet.

Several years ago, multiple branches of the willow were broken in a severe ice storm, leaving it vulnerable to disease and further damage. Although Scott worked to shape the tree again, it has continued to deteriorate.

Now, with a fungus moving up the tree, and the latest damaging wind storm taking out another large limb, it is finally time for the iconic tree to be removed and replaced by a new tree.

The arboretum staff invites visitors and members to share any special memories of the great willow via email, Facebook or letter, which will be compiled and preserved.

"I like trees because they seem more resigned to the way they have to live than other things do. I feel as if this tree knows everything I ever think of when I sit here. When I come back to it, I never have to remind it of anything; I begin just where I left off."

- Willa Cather, "O Pioneers!"



The Weeping Willow Circa 2001



The Dying Weeping Willow in January 2013

Hours and Contact Information

The Dyck Arboretum grounds are open year-round, from dawn until dusk.

The Visitor and Education Center, office and gift shop are open the following times:

- M-F 9 a.m. to 4 p.m.
- During special events
- Sa-Su 1 p.m. to 4 p.m. (May - Oct 15)

For information regarding our events, rentals or assistance with landscaping or prairie restorations, please email arboretum@hesston.edu, call 620-327-8127 or mail your request to:

Dyck Arboretum of the Plains
P.O. Box 3000
Hesston, KS 67062

2013 Prairie Wildflower Tours

Arboretum Tours with Scott:

Spend an hour with the Arboretum Executive Director and Horticulturist Scott Vogt learning blooming plants in the arboretum displays and strolling through the prairie reconstruction. Follow the arboretum through the seasons with these interactive guided tours.

Tuesday, May 14, 6:30 p.m.

Tuesday June 11, 6:30 p.m.

Tuesday July 17, 6:30 p.m.

Tuesday August 13, 6:30 p.m.

Monday, September 16, 6 p.m.

Monday, October 14, 6 p.m.

Admission is a suggested donation of \$2. Please call for reservations at least one hour in advance of the tour. Your donation supports our horticultural and educational programs.



Hesston College
P.O. Box 3000
Hesston, KS 67062
620-327-8127
www.dyckarboretum.org
arboretum@hesston.edu



Address Service Requested

Non-Profit Org.
U.S. Postage
PAID
Hesston, KS
Permit No. 5

Kids Summer Exploration Series – SAMPLE-MANIA!



Children ages 6-10 (or having completed kindergarten through 4th grade) are invited to join education coordinator Brad Guhr in exploring the natural world at the Dyck Arboretum of the Plains. Children will become junior research biologists as they explore and conduct biological sampling of pond life, trees and shrubs, wildflowers, and insects. They will discover and document nature up close and personal with all their senses on land and in water.

Monday, June 24, 9:00 a.m. - 11:00 a.m. – Pond Life
Tuesday, June 25, 9:00 a.m. - 11:00 a.m. – Trees and Shrubs
Wednesday, June 26, 9:00 a.m. - 11:00 a.m. – Wildflowers
Thursday, June 27, 9:00 a.m. - 11:00 a.m. – Insects

Registration is limited. Call 620-327-8127 for reservations by June 17. Each session: \$13 for members, \$18 for non-members. Four-session package \$48 for members and \$68 for non-members.

*Rent the
Visitor Center or
Prairie Pavilion
for your
special
occasions*

- *Family celebrations*
- *Weddings*
- *Church gatherings*
- *Business meetings*

*Call
620-327-8127*